

Military Wheel Solution

MWE 200



Engineered precision for
military maintenance



TECO MWE 200

It stems from an engineering approach oriented towards precision and control. A solution designed to ensure operational reliability and consistent maintenance performance on **military and defence vehicles with Hutchinson RFT run flat system**.

This equipment is characterised by a solid and sturdy construction, designed to ensure maximum operational efficiency. It allows all work steps of reinforced carcass tyres with **toroidal insert** to be handled conveniently and safely. The **mobile hydraulic control unit** develops a **thrust force of up to 45,000 N**, ensuring controlled, efficient and safe operations with a high level of protection for the operator.

GENERAL FEATURES

Applications

Heavy-duty military transport vehicles, armoured and tactical vehicles, light-duty military vehicles.

Structure

The load-bearing structure is designed to offer **rigidity and stability**, ensuring solid support during operations even under heavy loads.

Control unit

The control unit integrates systems designed to ensure **continuity, precision and control** at every stage of operation.



Technical solutions They allow the operator to extract the **Run Flat system** in a progressive manner, protecting the tyre and components.

Ergonomics The focus **on ergonomics and movement control** allows precise operation, reducing margins of error and optimising intervention times. .

Critical components Selected materials and surface treatments ensure **resistance, reliability and long service life**.

PRESS FOR SIDE RING REMOVAL

The rim clamping system on the tyre changer turntable **ensures a stable and precise fit**. The hydraulic press, powered by an independent control unit, **ensures high safety standards and maximum operating precision**, reducing work time and operator effort.





MAIN TECHNICAL FEATURES

- **Standalone, transportable station** for maximum operational flexibility
- Power supply of 400V/3/50-60 Hz (230V/3/50-60 Hz version available on request).
- Designed for extraction of toroidal ring Run Flat systems, **compatible with Hutchinson VFI and bead-lock systems with rigid ring.**
- **High level of operational safety.**
- Simple and intuitive operation, **with progressive manual controls for precise control of each step.**
- **Solution ideal for independent workshops and military maintenance service centres.**



OPERATIONAL PHASES

- **Clamping** of the rim on the tyre changer and subsequent mounting/demounting of the tyre with integrated Run Flat system, using the pressing equipment supplied for side ring removal.
- **Extraction and insertion** of the Run Flat toroidal ring system from/into the tyre using the standalone extraction station.



1



2



3



4



For more information,
scan the QR code to watch
the video available on the
website.



OPTIONAL KITS ON REQUEST

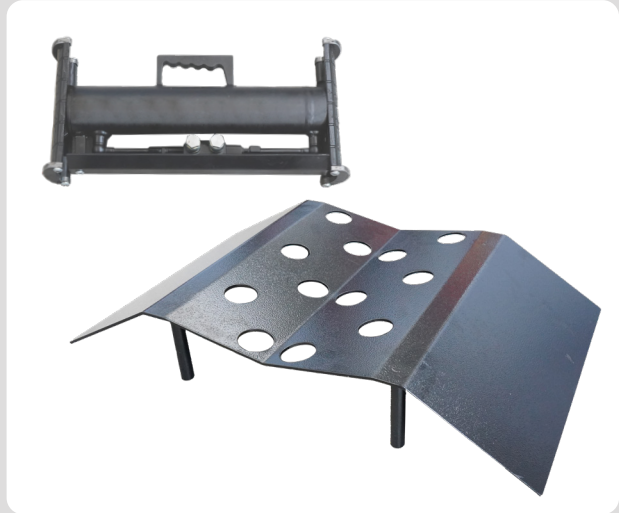
8-12120050/90

TOROID HANDLING ROLLER CONVEYOR



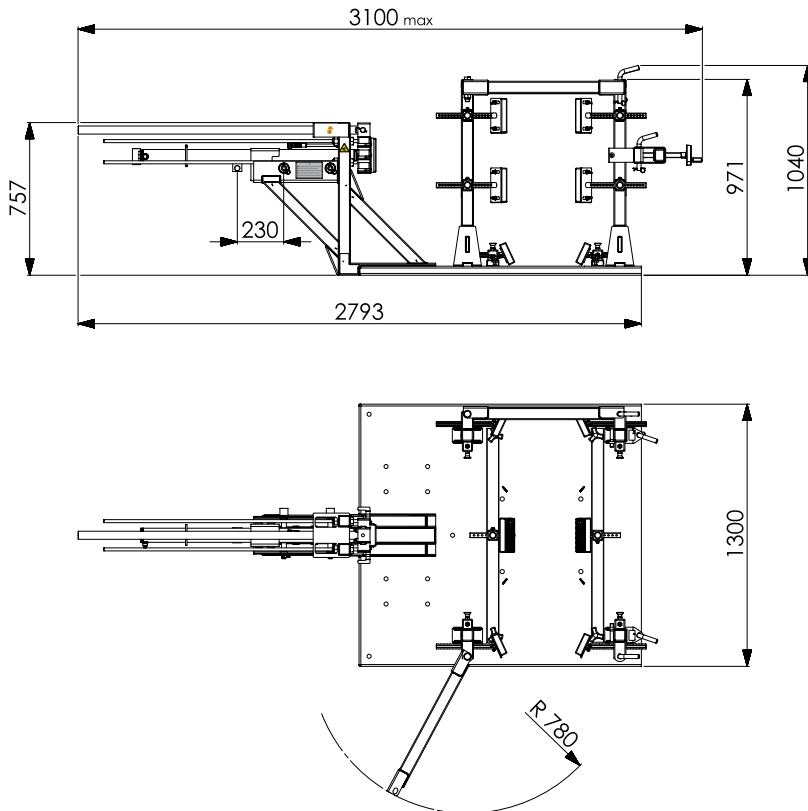
8-12120051/90

16" TYRE MAINTENANCE KIT



For other accessories, please refer to the relevant catalogue.

DIMENSIONS



SPECIFICATIONS

MAXIMUM WHEEL DIAMETER	1600 mm
MAXIMUM WHEEL WIDTH	650 mm
MOST FREQUENTLY USED TYRE TYPES (BY WAY OF EXAMPLE)	12.00R20
	14.00R20
	325/85R16
	335/80R20
	365/80R20
	395/85R20
MAXIMUM WHEEL WEIGHT	600 kg
CLAMPING CAPACITY	14"-26"
RUN FLAT SYSTEM TYPE	HUTCHINSON VFI
OVERALL DIMENSIONS	3000X1300X1050
POWER SUPPLY	• 400/3/50-60
	• 230/3/50-60 (on request)
DRIVES	HYDRAULIC - PROGRESSIVE MANUAL
EQUIPMENT WEIGHT	500 KG

